



Revised September 15, 2010

NOTICE OF MEETING

Senior's Advisory Committee

AGENDA

DATE: Friday, September 17, 2010
TIME: 9:30 am
PLACE: **City Hall Business Centre
2nd Floor, Vancouver City Hall**

PLEASE NOTE:

- *If you are unable to attend this meeting, please advise Nicole Ludwig at 604.873.7191 or nicole.ludwig@vancouver.ca*
- *Agendas and Minutes are available on the City of Vancouver civic agencies' web site at: <http://vancouver.ca/ctyclerk/civicagencies/civicindex.htm>*

Adoption of Agenda

Attendance

Approval of Minutes

The minutes of the July 16, 2010 meeting to be approved.

Correspondence - The correspondence folder to be circulated.

1. Election of Chair and Vice Chair

The Meeting Coordinator will conduct elections for Chair and Vice Chair for the remainder of the 2010 term.

2. 2803 W 41st Avenue (Crofton Manor) Rezoning Application (20 minutes)

NSDA Architects has applied to the City of Vancouver to amend the existing CD-1 (Comprehensive Development) District zoning on this site. The proposal is to replace three of the existing

buildings with a 6-storey "Main Lodge" building and a 3-storey "West Wing" building to provide Seniors Supportive and Assisted Housing; and a 2-storey "East Wing" Community Care Facility.

The other buildings existing on the site are proposed to be retained. The rezoning would increase the permitted density from a maximum floor space ratio (FSR) of 0.6 FSR to 1.12 FSR and the maximum height from 33 ft. to 79.4 ft.

The attached document refers.

3. **Rezoning and Development Permit Application - 2305-2325 West 7th Avenue, Kitsilano Neighbourhood House (DE413905) (15 minutes)**

The City is reviewing an application to rezone 2305 W. 7th Ave. (Kitsilano Neighbourhood House). The proposal is to renovate two heritage buildings and add an infill building linking the two. The 4-storey mixed use development would include improved Neighbourhood House and Child Care space as well as 15 units of Affordable Seniors Housing with rooftop gardens and amenity space. The proposed floor space ratio (FSR) is 1.70 and there are 6 surface parking spaces proposed.

4. **Presentation: Katheryn Willet - South Vancouver Neighbourhood House (10 minutes)**
5. **Presentation: Abbyfield Housing presenter: (20 minutes)**
6. **Accessible Community Gardens (15 minutes)**
7. **HandyDART Update (10 minutes)**
8. **Sub-committee Reports**
 - a. *Housing Subcommittee (20 minutes)*
 - b. *Ad Hoc committee on Seniors Fact Sheet (5 mins)*
9. **Other Business**
10. **Adjournment**

Next Meeting:

DATE: Friday, October 15, 2010
TIME: 9:30 am
PLACE: City Hall Business Centre, 2nd Floor, City Hall

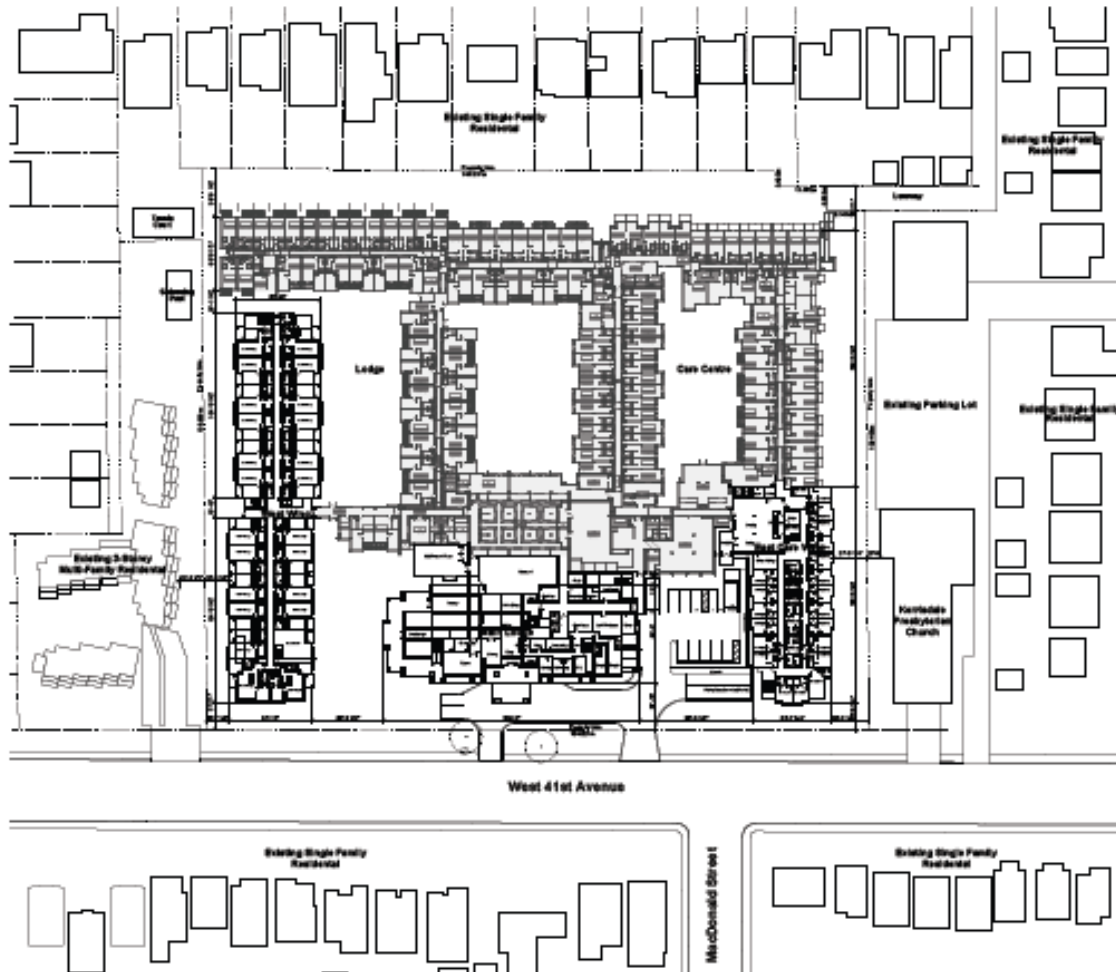
SENIORS ADVISORY COMMITTEE
REZONING APPLICATION: 2803 W 41ST AVENUE

August 6, 2010

Current Zoning

- Existing CD-1 (Comprehensive Development) District, originally rezoned in 1972
- Permitted uses: Seniors Supportive or Assisted Housing and Community Care Facility
- Maximum FSR of 0.6 and a maximum height of 33 ft. or 3 storeys

Figure 1: Site Plan



Proposal

NSDA Architects has applied to amend the existing CD-1 (Comprehensive Development) District zoning on this site. The proposal is to replace three of the existing buildings with the following:

- **6-storey "Main Lodge"** (Seniors Supportive and Assisted Housing). Fronting onto West 41st Avenue in the centre of the site, this building will include a new lobby/amenity area to replace the existing, with 5-storeys of housing above;
- **3-storey "West Wing"** (Seniors Supportive and Assisted Housing), replacing a 1-storey building; and

- 2-storey “East Wing” (Community Care Facility) replacing a 1-storey building and adding 39 care units.

The other existing buildings on the site are proposed to be retained.

The rezoning would increase the permitted building height and density as follows:

- **Density** – From 0.6 FSR to 1.12 FSR (i.e. the total building floor area permitted would be equal to 1.12 times the site area, instead of 0.6 times).
- **Height** – From 33 ft. to 79.4 ft. (to accommodate the 6 storey “Main Lodge” building located along 41st Avenue).

The proposed development is to be built in phases over approximately 10 years.

Table 1: Summary of Current and Proposed Zoning

	Current Zoning	Proposed Zoning
Zoning District	▪ CD-1 District (Comprehensive Development)	▪ CD-1 District Amended
Land Uses	▪ Seniors Assisted Housing (107 units) ▪ Community Care Facility (86 units)	▪ Seniors Assisted Housing (233 units) ▪ Community Care Facility (104 units)
Density	▪ 0.6 Floor Space Ratio (FSR) ▪ 143,677 sq. ft. (13 348 m ²) of total floor space	▪ 1.12 FSR ▪ 275,416 sq. ft. (25 587m ²) of total floor space
Building Height	▪ 33 ft. (10 m) ▪ 3 storeys	▪ 79.4 ft. (24.2 m) ▪ 6 storeys
Parking	▪ minimum of 79 parking spaces required	▪ 140 parking spaces proposed

Drawings:

Project drawings can be accessed at www.vancouver.ca/rezapps and include the following:

- Design rationale
- Context Plan
- Building Renderings
- Site Elevation Drawings (from 41st Avenue showing existing and proposed)
- Elevation Drawings
- Shadow Studies
- Landscape Plan

For more information

- Karen Hoese, Rezoning Planner
604.871.6403 or karen.hoese@vancouver.ca

Report

Joint SubCommittee on Accessible Community Gardens Submitted September 15, 2010 to Seniors Advisory Committee

BACKGROUND

Current Situation/Summary of Issues

Staff is in final stages of preparing a report on community gardens for Council. Our Joint Subcommittee on Accessible Community Gardens recently reviewed their draft report and made recommendations to ensure new community gardens are really accessible for seniors and people with disabilities.

Initial Result:

They are:

- Willing to include less important suggestions (wording etc)
- Reluctant to include important suggestions
 - that accessibility in new community gardens be required
 - that our guidelines be used as the definition of accessibility
 - that the City provide accessible water service and accessible pathways when they provide the initial infrastructure for community gardens.

Joint Subcommittee current action:

- Organizing meeting with City staff to discuss further changes in their report: we'd like Chris to be at the meeting
- Organizing meeting with Councillors Heather Deal & Andrea Reimer to discuss importance of requiring accessibility, using our guidelines as the standard for accessibility, and ensuring the City provides necessary infrastructure to make accessibility possible: again we'd like Chris to be there

SAC ACTION REQUESTED

- Approval of the Accessible Community Guidelines prepared by Joint Subcommittee
- Approval of resolutions re community gardens (see below)

Resolutions for the September 17 Seniors Advisory Committee Meeting:

- That the revised Guidelines for Accessible Community Gardens be approved by the Seniors Advisory Committee
- That the Seniors Advisory Committee asks that the City adopt these guidelines as the standard for accessibility for all new community gardens in Vancouver

- That the Seniors Advisory Committee requests that the City of Vancouver provide accessible pathways and accessible water service to all new community gardens, as part of the infrastructure it provides to new community gardens
- That the Seniors Advisory Committee accepts the September 14 report of the Joint Subcommittee on Accessible Community Gardens and includes it in its official record
- Detailed resolution #1:
 - Whereas almost all community gardens in Vancouver currently exclude seniors and persons with disabilities due to inappropriate design, and
 - Whereas community gardens are a public service that should be available to all persons residing in Vancouver, and
 - Whereas the exclusion of seniors and persons with disabilities from community gardens in Vancouver contradicts Council's priority on inclusive communities, and
 - Whereas the exclusion of seniors and persons with disabilities from community gardens contradicts the BC Human Rights Code, and
 - Whereas seniors with limited financial resources may be dependent on public green space, and
 - Whereas the City of Vancouver has the means to ameliorate this situation
 - Therefore, we call on City Council to ensure that all new community gardens in Vancouver are accessible for seniors and people with disabilities
- Detailed resolution #2:
 - Whereas most individuals are not aware of what is technically required to make a garden accessible for seniors and persons with disabilities, and
 - Whereas the failure to provide standards for accessibility will result in the continuation of gardens that are not accessible for seniors or people with disabilities, and
 - Whereas the Guidelines for Accessible Community Gardens were developed by both the City of Vancouver Seniors Advisory Committee and the City of Vancouver Persons with Disabilities Advisory Committee, and
 - Whereas these Guidelines have been revised after consultation with seniors organizations and individuals, disability organizations and individuals, with experts, and with staff, and have been revised according to their feedback, and
 - Whereas these Guidelines accommodate the needs of a wide range of seniors and persons with disabilities,
 - Therefore, we recommend that Council adopt these Guidelines as the standard for accessibility in new community gardens in Vancouver
- Detailed resolution #3:
 - Whereas accessible pathways are an integral and crucial part of accessibility in community gardens, and
 - Whereas all other aspects of accessibility are nullified if the paths are not accessible, and
 - Whereas installing accessible pathways is beyond the technical capacity of community gardeners, and
 - Whereas it is efficient and effective for City staff to install pathways in all new community gardens,

- Therefore, the Seniors Advisory Committee asks that the City of Vancouver adopt a policy of providing accessible pathways as part of the initial infrastructure it provides to new community gardens
- Detailed resolution #4:
 - Whereas accessible water service is an integral and crucial part of accessibility in community gardens, and
 - Whereas the City already installs water service in new community gardens on City land, and
 - Whereas the work to modify an existing water system to make it accessible later on is considerable, and
 - Whereas the work and cost to ensure that the water system is accessible at the outset is minimal,
 - Therefore, the Seniors Advisory Committee asks that the City of Vancouver adopt a policy of ensuring that the water service they install for new community gardens is accessible

Attachments

- This report as a word document
- Revised Accessible Community Garden Guidelines (slight changes from previously passed version)
- Minutes from the July 26 meeting of the Joint Subcommittee on Accessible Community Gardens
- Staff Draft Report on Community Gardens

Accessibility Guidelines for Community Gardens

*Prepared by the Joint Subcommittee on Accessible Community Gardens
City of Vancouver Persons with Disabilities Advisory Committee and Seniors Advisory Committee*

Accessibility Requirements

Raised Beds

- Number: At least 5% of plots should be accessible raised beds; 10-20% is ideal
- Height: 2-3' high; 2-2½' ideal for persons using wheelchairs; 3' ideal for persons standing to garden
- Width: Ideal width: 3½' if bed can be reached from both sides: acceptable range: 3-4' wide
Ideal width: 1¾' if bed can only be reached from one side: acceptable range: 1½ - 2' wide
- Surface: 4' wide wheel-able accessible surface should surround all raised beds; 5' is ideal
- Length: Doesn't affect accessibility, but longer beds are harder to build properly and maintain.
- Shape: Rectangle, horseshoe (U-shape), T-shape, E-shape, S-shape, tabletop
- Colour: Contrasted painted edges to facilitate people with low vision or blindness to locate plots

Paths

- Width: At least one 4'+ wide access path with 5' turning circles or at least one 5' wide pathway
All other paths at least 3' wide: 4'-5' wide is ideal.
Paths less than 5' wide need at least one 5' turning circle.
- Surface: Smooth, level, wheel-able, accessible, with tactile guide markers for persons who are blind or with low vision.

Accessible path surfaces:

- Compacted crushed granite fines, compacted crushed limestone, or other compacted crushed material are the least expensive, low maintenance option
- Other accessible path surfaces: concrete, pavers, brick, asphalt

Non-accessible path surfaces: bark mulch, grass, dirt, gravel

- Curbing: Optional: this helps ensure paths do not erode; important that curbs don't create a barrier.
- Tactile Guide Markers: If the path surface is solid concrete or asphalt, a tactile guide marker may be imbedded along the centre of the path for persons who are blind or with low vision.

Water access

- Taps: Minimum height: 2': 2-2½' ideal for persons using wheelchairs; 3'-4' ideal for persons who can't bend
Universal accessibility: water taps within 20' of every plot
Taps at/or very near each accessible plot
Taps brightly marked or painted
- Drip Systems: Consider drip watering systems at accessible raised beds with reachable, easy-to-use, on/off levers

Tools

- Toolshed: Level or ramped entrance at least 42" wide. Level entrance is ideal; maximum slope is 8%.
Entrance should be brightly marked or painted
Locks at usable height (3-4') and easy to use
Space inside for wheelchair to turn: 5' minimum turning circle
At least 20% of tools at reachable levels: 2-4' from the finished floor & easy to remove/replace

Tools

Consider adapted tools & storage of some tools at accessible beds
Tools & hoses should be brightly marked or painted

Minutes

Joint Subcommittee on Accessible Community Gardens

Monday, July 26, 2010; 9:00 a.m. – 11:30 a.m.

Committee Room #2, Vancouver City Hall

Summary

Decisions:

- 1) That the staff report on community gardens should be amended as follows:
 - All references to “the disabled” or “disabled persons” should be changed to “persons with disabilities”
 - All references to seniors “and/or” people with disabilities should be changed to seniors “and” people with disabilities
 - Garden site plans should be accessible
 - Accessible pathways and accessible water systems should be included in what the City provides at the start of a community garden
 - References to accessibility in community gardens should specifically refer to the Guidelines for Accessible Community Gardens from the Joint Subcommittee on Accessible Community Gardens/Persons with Disabilities Advisory Committee & Seniors Advisory Committee
 - The Guidelines for Accessible Community Gardens from our Joint Subcommittee should be included as an appendix in staff’s report
 - Requirements for accessibility in community gardens should not be combined with charity plot requirements.

- 2) That the Accessible Community Garden Guidelines be revised to include
 - Water tap minimum height of 2’ (rather than 1.5’)
 - Specific separate reference to tactile guide markers in path section
 - Paths less than 5’ wide should include a 5’ wide turning circle; increase ideal path widths
 - Toolshed minimum door width of 42”; 5’ wide turning circle inside toolshed; tool storage height 2-4’ above finished floor
 - Accessibility requirements” should be added at the beginning
 - Several wording changes for clarity (see minutes)
 - Measurements should be in metric with imperial in brackets

- 3) Miscellaneous other decisions
 - If Mobi-Mat is an appropriate surface for garden paths, it could be used in existing gardens to improve their accessibility. New gardens should still be required to have permanent accessible pathways (ie not Mobi-Mat).
 - It is too expensive/time consuming to ask the City to provide accessible raised beds for new gardens at this time. We will explore a partnership to do this.
 - That the background section of the accessibility guidelines doesn’t need to be attached for our current purposes; Jill will revise the background & send to the Subcommittee for review

MORE DETAILED SUMMARY OF DECISIONS

1. Staff report on community gardens should be changed to ensure accessibility actually occurs
 - a. The requirement that new gardens submit plans to the City should explicitly include that the plan has to be accessible
 - Appendix Page 2, #5.
 - Add the word “accessible” before the word “comprehensive”

- Revised wording: "A comprehensive accessible garden site plan must be approved by City staff".
 - Reason: Ensures that new garden site plans include accessibility.
- b. The requirement that new gardens be accessible should explicitly refer to our Subcommittee's Accessibility Guidelines. Proposed new garden plans should meet our Accessibility Guidelines.
- Appendix Page 2, #8
 - Add words "according to the Accessibility Guidelines for Community Gardens provided by the City of Vancouver Joint Subcommittee on Accessible Community Gardens"
 - Revised wording: "All gardens shall include provisions for accessibility for seniors and persons with disabilities, as well as fully accessible paths, according to the Accessibility Guidelines for Community Gardens provided by the City of Vancouver Joint Subcommittee on Accessible Community Gardens."
 - Reason: This ensures that there is a common understanding of what accessibility means, that new gardens know what is required, and that they are able to design and build an accessible garden.
- c. The Guidelines for Accessible Community Gardens from the Joint Subcommittee on Accessible Community Gardens should be included in the staff report as an appendix
- d. The City of Vancouver should provide accessible pathways and accessible water service as part of the initial work it does on new community gardens
- Appendix Page 1, # 4
 - Add "installing accessible pathways" & the word "accessible" before "water service"
 - Revised wording: "The garden is developed and maintained at no cost to the City, except that prior to the first season, the City will, at its cost, prepare the site for planting by removing undesirable vegetation, levelling the land, installing accessible pathways, adding compost, and providing an accessible water service to the property"
 - Reason: This ensures that new gardens are actually accessible, because the knowledge/work involved in installing accessible pathways & accessible water systems is beyond the capability of most groups starting a community garden.
- e. Accessibility should apply to seniors and to people with disabilities. All references to "seniors and/or people with disabilities" should be changed to "seniors and people with disabilities".
- Report page 6, #7; Appendix page 2, #8
 - Wording changes: replace "and/or" with "and"
 - Reason: This ensures accessibility applies to both seniors and to people with disabilities. The original wording allows accessibility to apply only to seniors or only to people with disabilities.
- f. Description of people with disabilities should be appropriate
- Report page 6, #7 & #7a; Appendix page 2, #8.
 - Exact wording changes: References to "the disabled" or "disabled persons" should be changed to "people with disabilities"
 - Reason: reflects respectful reference to people with disabilities
- g. References to the need for accessibility should be presented as separate points; accessibility should not be combined with the need for plots for charitable purposes
- Report page 6, #7a; Appendix page 2, #8
 - Wording changes:

* Report Page 6, #7a

^ Sentence 1 in 7a should remain 7a)

^ Sentence 2 in 7a should become a separate point called 7b) with the words "In addition" deleted

^ Revised wording:

7. From the feedback received, there is a desire within the gardening community to ensure that each new community garden designate a number of plots for seniors and people with disabilities and for sharing with the greater community. Therefore the following addition to the guidelines is suggested:
 - (a) All gardens shall include provisions for accessibility for seniors and people with disabilities, as well as fully accessible paths.
 - (b) Two plots of average size shall be designated for one of the following: a local non-profit, a neighbouring child-care centre, or a common area for food grown for charitable purposes

* Appendix Page 2, #8

^ Sentence 1 in #8 should remain #8

^ Sentence 2 in #8 should become a separate point numbered #9 with the words "In addition" deleted; Numbering of subsequent points needs to be adjusted accordingly.

^ Revised wording:

8: All gardens shall include provisions for accessibility for seniors and persons with disabilities, as well as fully accessible paths, according to the Accessibility Guidelines for Community Gardens provided by the City of Vancouver Joint Subcommittee on Accessible Community Gardens.

9: Two (2) plots of average size designated for one of the following: a) a local non-profit; b) a neighbouring child-care centre, or c) a common area for food grown for charitable purposes."

- Reason: Important that accessibility requirements be a separate point for emphasis and clarity. Also, accessibility of community gardens is not a "charity" activity, and combining provision of plots for charity/non-profits with the requirement that gardens be accessible implies a connection between the two.

2. The Guidelines for Accessible Community Gardens developed by our Subcommittee should be revised slightly (see minutes for exact details)

- a. Minimum height for water taps should be 2' (rather than 1.5')
- b. Specific separate reference to tactile guide markers should be included in path section
- c. Minimum door width & turning circle of 5' should be included in toolshed requirements
- d. Explicit accessible height range for tool storage of 2-4' above the finished floor should be added
- e. Path widths should be slightly wider & paths less than 5' wide should include 5' wide turning circles
- f. "Accessibility requirements" should be added at the beginning
- g. Several wording changes for clarity (see minutes)
- h. Measurements should be presented in metric & imperial (in brackets)

3. Miscellaneous other decisions

- a. If Mobi-Mat is an appropriate surface for garden paths, it could be used to make existing gardens more accessible. New gardens should still be required to have permanent accessible pathways (ie not Mobi-Mat).

- b. It is probably too expensive/time consuming to ask the City to provide accessible raised beds for new gardens at this time. We will explore a partnership to do this.
- c. That the background section of the accessibility guidelines doesn't need to be attached for our current purposes, but that Jill will revise & send back to the Subcommittee

Work Commitments from the July 26 Meeting

Everyone:

- Review revised Guidelines for Accessible Community Gardens for errors
- Review Subcommittee minutes
- Review message to Persons with Disabilities Advisory Committee & Seniors Advisory Committee

Jill

- Revise Guidelines for Accessible Community Gardens as per decisions at July 26 meeting and send to Subcommittee members for review
- Review draft minutes & send to Subcommittee members to review
- Prepare report to full committees (Persons with Disabilities & Seniors) asking for their approval of our recommended changes to the City report
 - Send draft report to Subcommittee for comments/changes
 - Revise & send report to Persons with Disabilities & Seniors Advisory Committees
- Consult with Mary Clare Zak & City staff re most effective process for ensuring these proposed accessibility changes are adopted
- Contact committee chairs
- Review/revise background section of Accessibility Guidelines & send to Subcommittee for review

Monica

- Prepare draft meeting notes
- Check to see if Mobi-Mat is an appropriate surface for community garden paths and if it can be cut; report back to Subcommittee
- Check to see if motions can be passed by Advisory Committees by email

Full Meeting Notes

Subcommittee on Accessible Community Gardens Meeting

Monday, July 26, 2010; 9:00 a.m. – 11:30 a.m.

Committee Room #2, Vancouver City Hall

Present: Jill Weiss (Chair)

Thomas Brunner

Sandy Yee

Pamela Andrews

Monica Kay (Staff)

Regrets: Jeanette Andersen, Tasia Alexis, Kelly Haydon

I. Introduction of new members of Subcommittee

Members of the Subcommittee introduced themselves, including new members Pam Andrews & Thomas Brunner.

II. Adoption of Agenda

The Agenda was adopted by consent.

III. Review of Staff Report to Council

As background, Jill Weiss indicated that two years ago, Staff conducted a review of draft Community Garden Guidelines and consulted with existing community gardens about these guidelines. The community gardens made a number of recommendations, including that all new community gardens be accessible.

Staff have now prepared a draft report for Council, which covers two areas:

1. a review of the Community Garden Pilot Project from 2006; and
2. new Guidelines for Community Gardens.

The Subcommittee reviewed the areas in the report that refer to accessibility, seniors or persons with disabilities.

RECOMMENDED CHANGES TO REPORT, PART I: COMMUNITY GARDEN PILOT PROJECT

Page 6, #7. Original paragraph reads:

- "7. From the feedback received, there is a desire within the gardening community to ensure that each new community garden designate a number of plots for seniors and the disabled and for sharing with the greater community. Therefore the following addition to the guidelines is suggested:
- (a) All gardens shall include provisions for accessibility for seniors and/or disabled persons, as well as fully accessible paths. In addition, two plots of average size shall be designated for one of the following: a local non-profit, a neighbouring child-care centre, or a common area for food grown for charitable purposes."

The Subcommittee recommends the following amendments to #7 (Page 6):

- that the words "and/or" in subparagraph (a) be changed to read "and;"
- that references to "the disabled" and "disabled persons" in clauses 7 and 7(a) be changed to read "persons with disabilities;" and
- that subparagraph (a) be broken into two paragraphs, with (a) referencing seniors and persons with disabilities, and (b) referencing local non-profit, neighbouring child-care centre, and common area for food grown for charitable purposes.

The amended paragraph should read:

7. From the feedback received, there is a desire within the gardening community to ensure that each new community garden designate a number of plots for seniors and people with disabilities and for sharing with the greater community. Therefore the following addition to the guidelines is suggested:
- (a) All gardens shall include provisions for accessibility for seniors and people with disabilities, as well as fully accessible paths.

- (b) Two plots of average size shall be designated for one of the following: a local non-profit, a neighbouring child-care centre, or a common area for food grown for charitable purposes.

There was discussion about whether a minimum number of accessible plots should be specified, and Jill noted that she didn't remember if a minimum percentage of accessible plots was identified during the consultation. She agreed to check and amend accordingly.

It was also noted that these provisions apply to new community gardens.

Subcommittee members discussed what would occur if a garden was unable or unwilling to fill their accessible plots with seniors or persons with a disability. Members concurred that gardens had to have accessible plots and should try to fill them with people who need accessibility. However, if a garden was unable to find people who need accessibility for these plots, they could be available to others.

RECOMMENDED CHANGES TO REPORT PART II: GUIDELINES FOR COMMUNITY GARDENS

(Appendix A)

The following areas were identified as requiring amendment:

CLAUSE 4: "The garden is developed and maintained at no cost to the City, except that prior to the first season, the City will, at its cost, prepare the site for planting by removing undesirable vegetation, levelling the land, adding compost and providing a water service to the property;" (Appendix page 1, #4)

It was agreed that Clause 4 should include the City's responsibility to install accessible pathways and an accessible water service.

The recommendation that the City install accessible pathways was already passed as a motion by the Persons with Disabilities Advisory Committee. Members will determine if this was also passed by the Seniors Advisory Committee.

The recommendation that the City install an accessible water service has not been previously passed, and will be referred to the full committees.

Discussion about the City installing accessible water service included observations that it was far less expensive and complicated to ensure accessible water service when first installed, rather than rebuilding or renovating later; that this did not involve significant expense, and that there was less likelihood of damage to the taps if they were installed as outlined above. The recommendation that the City provide an accessible water service will need to be brought back to the Committees for approval.

Amended Clause 4 should read:

Clause 4 (rev): "The garden is developed and maintained at no cost to the City, except that prior to the first season, the City will, at its cost, prepare the site for planting by

removing undesirable vegetation, levelling the land, installing accessible pathways, adding compost, and providing an accessible water service to the property”

There was a brief discussion regarding the possible use of Mobi-Mat for accessible pathways in community gardens. Staff Liaison will inquire as to whether Mobi-Mat would be an appropriate surface for the conditions in community gardens, and about the possibility of cutting Mobi-Mat to fit pathways, and report back. Pamela indicated that if Mobi-Mat is an appropriate surface for garden pathways, it would be preferable to use Mobi-Mat in existing gardens, and maintain the requirement for new community gardens to be supplied with permanent accessible pathways.

Regarding who is responsible for building of raised beds, the Subcommittee discussed the possibility of the City being responsible for building raised beds as part of its initial work on new community gardens. After discussion, members decided this would be too expensive and time-consuming to ask for at this time. Members discussed possibilities for partnership between various organizations, for example the Vancouver Foundation and the City or other organizations, to help fund/build accessible raised beds.

*

CLAUSE 5:“A comprehensive garden site plan must be approved by City staff. The plan must include the location of plots, irrigation, accessible pathways, trees, garden art, paved areas, picnic areas, compost areas, fences, raised garden beds, tool sheds, arbours, site furniture and other structures.” (Appendix Page 2, #5)

The Subcommittee emphasised that the comprehensive site plan should be accessible and that this requirement should be explicit. Members decided this clause requires addition of the word “accessible” after “comprehensive” and before “garden.”

Amended Clause 5 should read:

Clause 5 (rev):“A comprehensive accessible garden site plan must be approved by City staff. The plan must include the location of plots, irrigation, accessible pathways, trees, garden art, paved areas, picnic areas, compost areas, fences, raised garden beds, tool sheds, arbours, site furniture and other structures.”

**

CLAUSE 8: “All gardens shall include provisions for accessibility for seniors and/or disabled persons, as well as fully accessible paths. In addition, two (2) plots of average size designated for one of the following: a) a local non-profit; b) a neighbouring child-care centre, or c) a common area for food grown for charitable purposes.” (Appendix Page 2, #8)

The Subcommittee recommends the following changes to this clause:

- the word “and” shall replace the words “and/or;”
- the words “persons with disabilities” shall replace “disabled persons;”

- the words “according to the Accessibility Guidelines for Community Gardens provided by the City of Vancouver Joint Subcommittee on Accessible Community Gardens” should be added at the end of the first sentence
- the second sentence, beginning: “In addition,” shall form a separate clause 9, with the existing clause 9 being renumbered clause 10.

Amended Clause 8 & new Clause 9 should read:

Clause 8 (rev): “All gardens shall include provisions for accessibility for seniors and persons with disabilities, as well as fully accessible paths, according to the Accessibility Guidelines for Community Gardens provided by the City of Vancouver Joint Subcommittee on Accessible Community Gardens.”

Clause 9: (rev) “Two (2) plots of average size designated for one of the following: a) a local non-profit; b) a neighbouring child-care centre, or c) a common area for food grown for charitable purposes.”

The original Clause 9 becomes Clause 10.

- ▶ The Subcommittee also recommends that the Joint Subcommittee Guidelines for Accessible Community Gardens should be attached to the City Guidelines for reference.

RECOMMENDED CHANGES TO OUR SUBCOMMITTEE’S ACCESSIBILITY STANDARDS FOR COMMUNITY GARDENS

The Subcommittee reviewed our previously developed accessibility guidelines for community gardens and decided on the following changes:

- “Accessibility Features” changed to “Accessibility Requirements.”
- All measurements be provided in both metric and imperial formats, with imperial in brackets.
- Raised Beds: the minimum number of accessible raised beds should be described separately from the ideal number to avoid confusion.
Previous version: “at least 5-20% of plots should be accessible raised beds; 10-20% is ideal”.

Recommended change: “At least 5% of plots should be accessible raised beds; 10-20% is ideal”.

“Colour” should read: “Contrasted painted edges to facilitate people with low vision or blindness to locate plots.”

- “Paths” section changes:
 - “Width”, should read: “At least one 4’+ wide access path with 5’ turning circles or at least one 5’ wide pathway. All other pathways at least 3’ wide; 4-5’ is ideal. 3’ wide paths need at least one 5’ turning area along the path”.
 - “Surface”: Add: “with tactile guide markers for persons who are blind or have low vision”.
 - “Non” accessible should read “not” accessible.

- Water Access changes:
 - Minimum water tap height should be 2', not 1½'

- Tools/Toolshed section changes:
 - Width of toolshed door should be at least 42" wide
 - Add: "minimum 5' turning circle" to "space inside for wheelchair to turn"
 - Add: "between 2 – 4' off the finished floor" to "Tools attached at reachable levels and easy to remove/replace"

With respect to the "Background/Details" portion of the document, the Subcommittee determined that this would be worked on at a later date, and that it was not needed as part of the Standards. Further discussion on changes to this portion of the document is required.

IV Action

The Subcommittee identified the following issues as requiring further action:

- How to provide feedback to staff?
- How to ensure the needed changes are incorporated in the Staff Report?
- Once the documents are amended appropriately, how best to present them to Council and ensure they are passed?

Subcommittee members determined that Jill would consult with City staff to determine the correct process, and also connect with Committee Chairs; Staff Liaison will find out whether it is possible for Committee members to vote on and pass a Motion via email. If it is possible to pass a Motion via email, that should be done; alternatively, Jill will discuss with MaryClare Zak that the Persons with Disabilities Advisory Committee has already endorsed most of the proposed changes, and seek advice on appropriate next steps. Jill will also review the "Background" section and circulate any suggested changes.